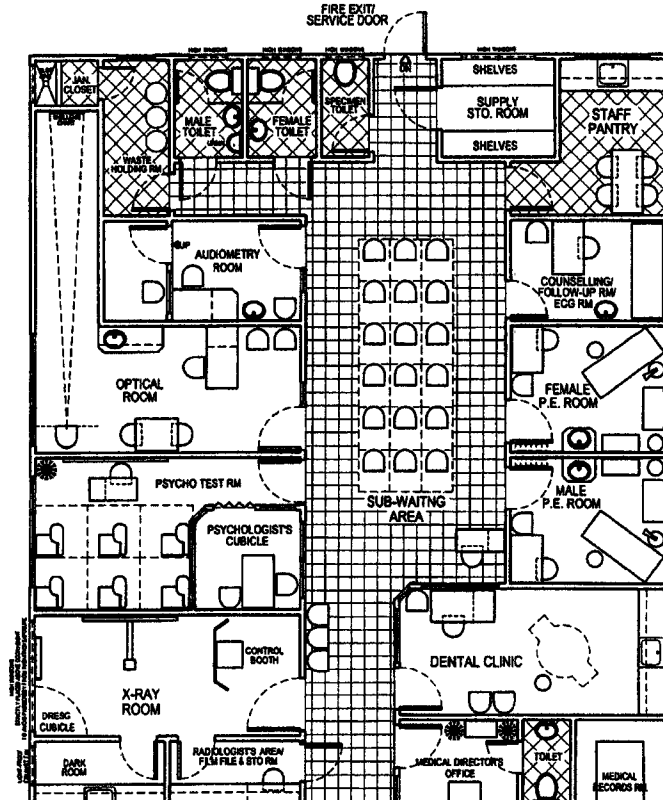
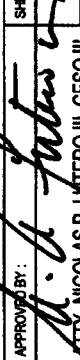
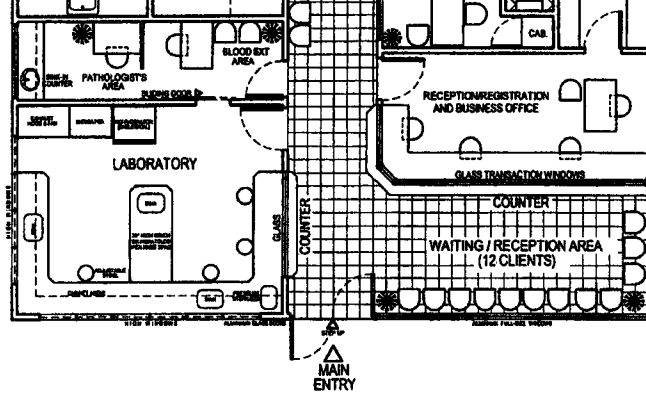


ANNEX - B

A.O. No. 2013-0006



SHEET CONTENT	APPROVED BY:	SHEET NO
SCHEMATIC FLOOR PLAN	 ATTY. NICOLAS B. UTTERO III, CESO III DIRECTOR IV DCH - Bureau of Health Facilities and Services	*1
		CADD BY:
		BMS-SDD
		08/24/2011



REFERENCE / SAMPLE PLAN - ONE STOREY OFW CLINIC

TOTAL FLOOR AREA INCLUDING WAITING AREAS AND CORRIDORS: APPROX. 240.00 SQ. MTS.

DOH-BHFS STANDARDS DEVELOPMENT DIVISION

NOTE : FOR USE AND REFERENCE OF DOH-BHFS REGULATORY OFFICER ONLY

REVISED EDITION AS OF AUGUST 24, 2011

GRAPHICAL SCALE :

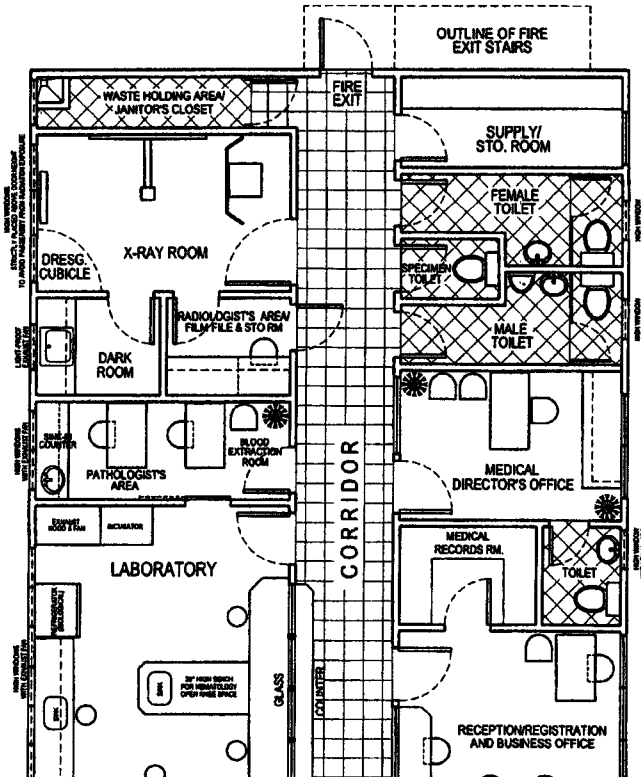


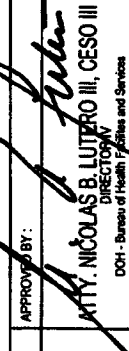
TITLE OF HEALTH FACILITY PROJECT
**REFERENCE PLAN
 ONE-STOREY OFW CLINIC**

Republic of the Philippines
 DEPARTMENT OF HEALTH
**BUREAU OF HEALTH
 FACILITIES & SERVICES**
 BUILDING NO. 15, San Lazaro Compound
 Real Progreso, Sta. Cruz, Manila

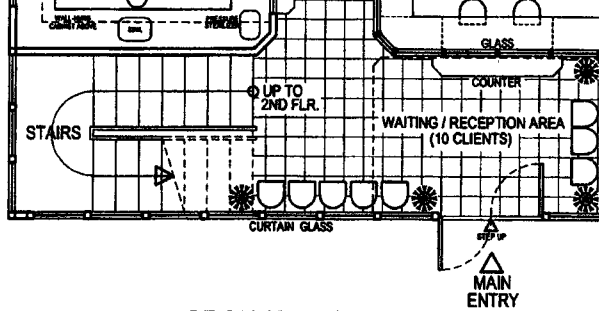
ANNEX - B

A.O. No. 2013-0006



SHEET NO.	A - 1
SHEET CONTENT	SCHEMATIC GROUND FLOOR PLAN
APPROVED BY:	
CADD BY:	MTY. NICOLAS B. LUTPRO III, CESO III
BHS-SDD	DIRECTOR OF Health, Fitness and Services
	DOH - Bureau of Health, Fitness and Services

06/24/2011



GROUND FLOOR PLAN

REFERENCE / SAMPLE PLAN - TWO STOREY OFW CLINIC

TOTAL FLOOR AREA INCLUDING WAITING AREAS AND CORRIDORS: APPROX. 125.00 SQ. MTS.

DOH-BHFS STANDARDS DEVELOPMENT DIVISION

NOTE : FOR USE AND REFERENCE OF DOH-BHFS REGULATORY OFFICER ONLY

REVISED EDITION AS OF AUGUST 24, 2011

GRAPHICAL SCALE :



TITLE OF HEALTH FACILITY PROJECT

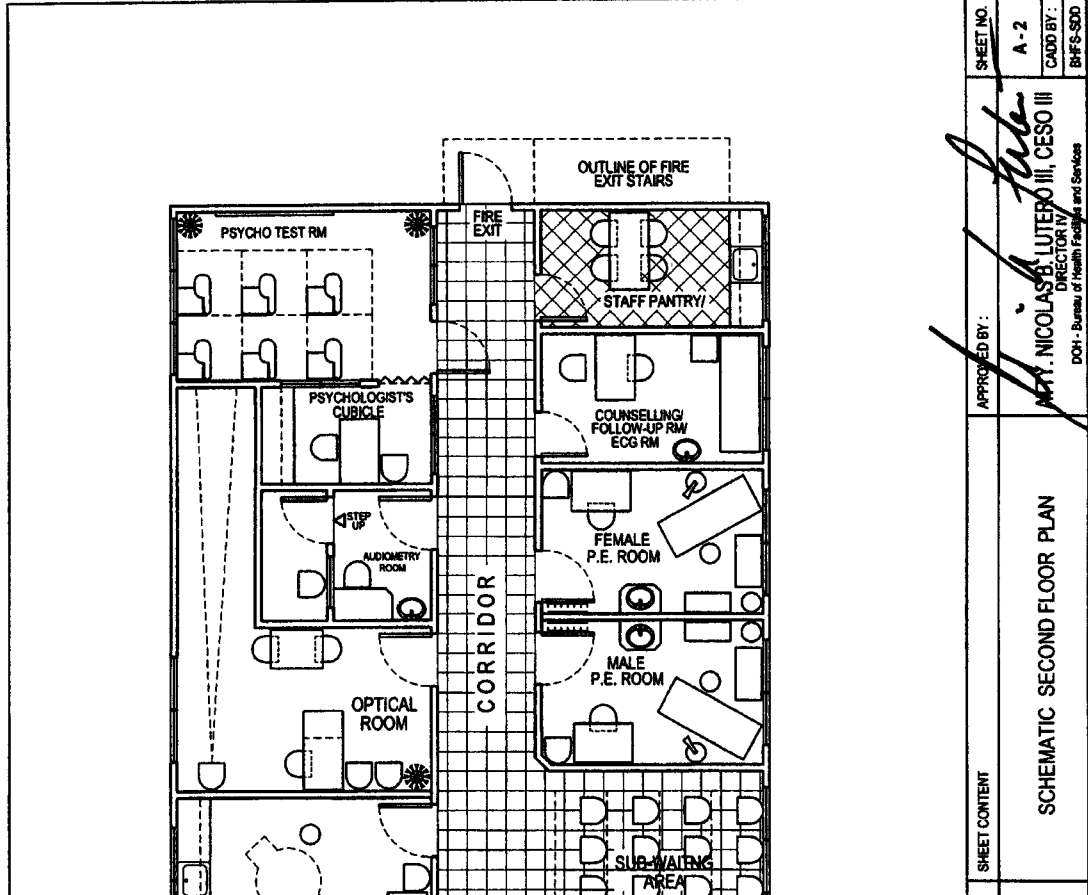
**REFERENCE PLAN
TWO-STOREY OFW CLINIC**

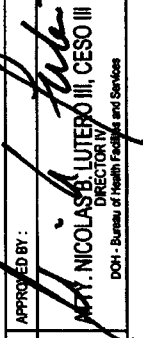
Republic of the Philippines
DEPARTMENT OF HEALTH
**BUREAU OF HEALTH
FACILITIES & SERVICES**
BUILDING NO. 15, San Lazaro Compound
Rizal Avenue, Sta. Cruz, Manila



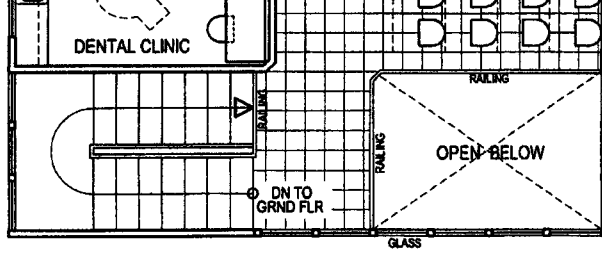
ANNEX - B

A.O. No. 2013-0006



SHEET CONTENT	APPROVED BY:	SHEET NO.
	 DR. NICHOLAS B. LUTERO III, CESO III DIRECTOR IV DOH - Bureau of Health Facilities and Services	A-2 CADD BY: BHFS-SDD 08/24/2011

SCHEMATIC SECOND FLOOR PLAN



SECOND FLOOR PLAN

REFERENCE / SAMPLE PLAN - TWO STOREY OFW CLINIC

TOTAL FLOOR AREA INCLUDING WAITING AREAS AND CORRIDORS: APPROX. 125.00 SQ. MTS.

DOH-BHFS STANDARDS DEVELOPMENT DIVISION

NOTE : FOR USE AND REFERENCE OF DOH-BHFS REGULATORY OFFICER ONLY

REVISED EDITION AS OF AUGUST 24, 2011

GRAPHICAL SCALE :



TITLE OF HEALTH FACILITY PROJECT
**REFERENCE PLAN
 TWO-STOREY OFW CLINIC**

Republic of the Philippines
 DEPARTMENT OF HEALTH
**BUREAU OF HEALTH
 FACILITIES & SERVICES**
 BUILDING NO. 15, San Lazaro Compound
 Rizal Avenue, Sta. Cruz, Manila

